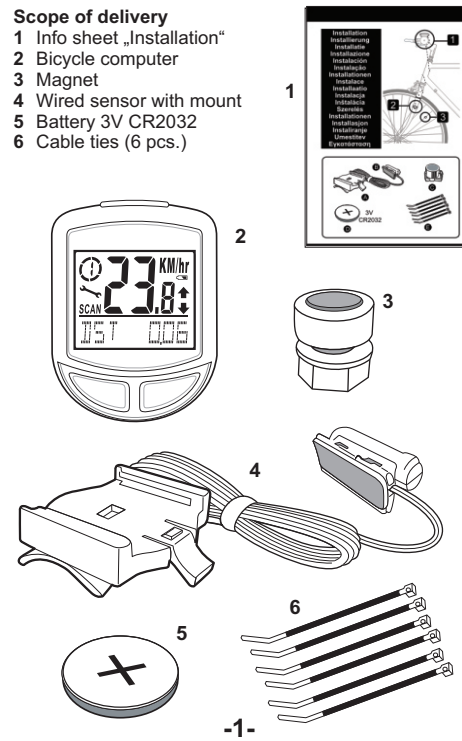
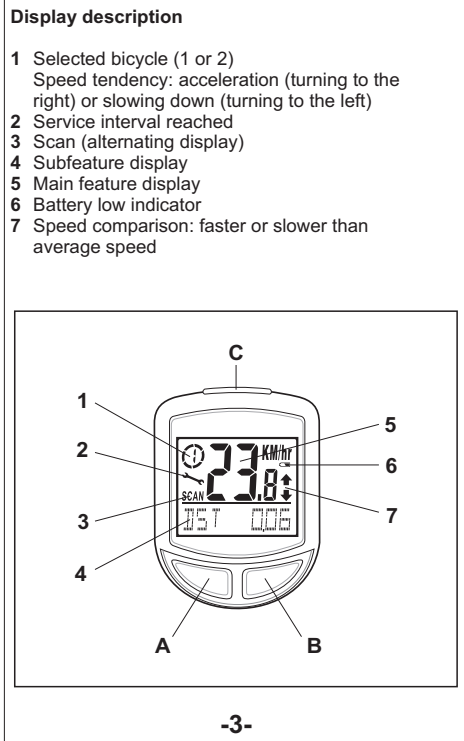


10-LD2930
Edition 1



- Scope of delivery**
- 1 Info sheet „Installation“
 - 2 Bicycle computer
 - 3 Magnet
 - 4 Wired sensor with mount
 - 5 Battery 3V CR2032
 - 6 Cable ties (6 pcs.)
- Features**
- Memory for 2 bicycles
 - Service interval selectable
 - Speed display (0-99,9km/h)
 - Average speed (0-99,9km/h)
 - Maximum speed (0-99,9km/h)
 - Speed comparison
 - Speed tendency (Accelerating or slowing down)
 - Trip timer (max 9:59:59)
 - Trip timer (forward counting)
 - Trip timer (reverse counting)
 - Time
 - Stop watch
 - Distance counter (0-999,99km/m)
 - Distance counter (forward counting)
 - Distance counter (reverse counting)
 - Distance counter for 2 bicycles
 - Total distance
 - Memory function for Odometer
 - Scan feature for alternating display
 - Thermometer with max. memory
 - Thermometer with min. memory
 - Celsius or Fahrenheit selectable
 - Kilometers or miles selectable
 - Fat burn counter
 - Calorie counter
 - Standby feature
 - Auto start
 - Easy mode selectable
 - Advanced mode selectable
 - Backlight



Congratulations on your purchase of this bicycle computer. Please read the instruction manual before using the unit.

Safety notes
This electronic appliance must be protected from water and other hazards. It is not a toy and children should not use it unsupervised.

Cleaning instructions
Clean the product with a dry, lint-free cloth. A glasses cleaning cloth is ideal.

Setup
The setup and installation of the bicycle computer is described on the information sheet „installation“. After installing the bicycle computer, please remove the protective foil from the display and press any key to start the computer.

Light
Press C briefly to activate the light temporarily.

Basic settings
The setting mode for basic settings is activated by inserting the battery or by pressing RESET (on the back side of the unit).

The language selection will appear on the display. Select a language (English, German or French) by pressing B. Confirm your selection by pressing A.

The display will now show the mode for advanced users
ADVANCE / FORTGES / AVANCE
ERVAREN / AVANZATO / FACIL
Or for beginners
EASY / EINFACH / FACILE
BEGINNER / FACILE / AVANCADO
Select a mode by pressing B. Confirm your selection by pressing A.

Important: In easy mode only the following features are available:
Speed, average speed, trip distance and trip timer. In advanced mode all features are available and settings for 2 bicycles can be stored.

C1 will now appear on the display. Set the circumference of your tire in mm (see "Calculating tire circumference"). Press B to set each digit and press A to confirm each setting.

If you have selected advanced mode, you may now enter the tire circumference for an additional bicycle.

Calculating tire circumference
Tire circumference can be easily calculated by multiplying the tire diameter with 3.1416. The tire circumference of some standard tire types is listed in the following table.

Diameter	Circumference
20"	1598
22"	1759
24"	1916
26"	2073
26,5" (650A)	2117
26,6" (700x25C)	2124
26,8" (700x28C)	2136
27" (700x32C)	2155
28" (700B)	2237
ATB 24"x1,75	1888
ATB 26x1,4	1995
ATB 26x1,5	2030
ATB 26x1,75	2045
ATB 26x2 (650B)	2099
27"x1	2138
27"x1 1/4	2155

The display now shows the unit of distance
SET KM / EINST KM / AJUSTE KM
SET MI / EINST MI / AJUSTE MI
Select the unit miles (M) or Kilometers (KM) by pressing B. Confirm your setting by pressing A.

The display now shows the age selection
SET AGE / ALTER / AGE
LEEFTIJD / ETA / EDAD
Set your age in years. Press B to set each digit and press A to confirm each setting.

The display now shows the unit of weight selection
SET KG / EINST KG / AJUSTE KG
SET LB / EINST LB / AJUSTE LB
Select the unit Kilogram (KG) or Pounds (LB) by pressing B. Confirm your selection by pressing A.

The display now shows the weight selection
SET WT / GEWICHT / POIDS
GEWICHT / PESO / PESO
Set your weight in the selected unit. Press B to set each digit and press A to confirm each setting.

The display will now show the 12 or 24 hour time format selection
SET CLK / EINST U / REG MONT
UUR INST / IMP / AJUSTE H
Select your preferred format by pressing B. Confirm your selection by pressing A.
Set the hours and minutes in the same way.

The display will now show the service interval selection
SERVICE / SERVICE / SERVICE
SERVIZIO / SERVIZIO / SERVIZIO
Set the interval by pressing B. Confirm your selection by pressing A.
Possible settings are 200, 400, 600 or 800 Kilometers or Miles

If you selected advanced mode you may now select the service interval for an additional bicycle.

The display will now show the temperature unit selection. Select the temperature unit Celsius (°C) or Fahrenheit (°F) by pressing B. Confirm your selection by pressing A.

Using the bicycle computer
Press B to select a feature mode of the computer. The lower row of the display will show the name of the mode.
Press A to reach the subfeatures of each mode.

Press and hold A to reach the setting mode of a feature or reset stored values.

Time
CLOCK / UHRZEIT / HEURE
TIJD / ORARIO / HORA
Press and hold A for 3 seconds to enter time setting mode (see basic settings)

Total distance
TOTODO / KM-RAD / KM-VELO
KMBIKE / KMBICI / KMBICI
Press and hold A for 3 seconds to enter setting mode for tire diameter (see basic settings). After tire diameter setting the stored values for the odometer can be changed.

Total distance for both bicycles
TOTALODO / GESAMTKM / DIST-TOT
TOTAALKM / KM-TOTAL / KM-TOTAL
Press and hold A for 3 seconds to enter tire circumference setting (see basic settings). After tire diameter setting the stored values for the odometer can be changed.

Trip distance
TRIPDIST / TAGES-KM / DISJOUR
DAG-KM / KM-GIORN / KM-DIA
Press and hold A for 3 seconds to reset trip distance, trip time and average speed.

Maximum speed
MAXSPEED / MAX-KMH / VIT-MAX
MAX-KM/H / V-MASSIM / V-MAXIM
Press and hold A for 3 seconds to reset the stored maximum speed.

Average speed
AVGSPEED / DURCH-KM / VITMOYEN
GEM-KM/H / V-MEDIA / V-MEDIA
The average speed can be reset in the menu „trip distance“.

Trip time
TRIPTIME / FAHRZEIT / TEMPPARC
RIT-TIJD / TEMP-GIR / TIEMP-TR
The trip time can be reset in the menu „trip distance“.

Thermometer
TEMP / GRAD / TEMP
TEMP / TEMP / TEMP
Press A to show the maximum (HI) and minimum (LO) values.
Press and hold A for 3 seconds to reach temperature unit selection (°C or °F) (see basic settings)

Stop watch
STPWATCH / STOPPUHR / CHRONO
STPWATCH / CRONOMET / CRONOMET
Press A to start or stop the stop watch. Press and hold A to reset the stop watch.

Current calorie consumption
CAL RATE / KAL RATE / CONS CAL
CAL CONS / CAL CONS / CAL RATE
Calorie consumption at the current speed is displayed.

Calorie counter
CALORIE / KALORIEN / CALORIE
CALORIE / CALORIA / CALORIA
Press and hold A for 3 seconds to reset the calorie counter.

Fat burn in grams
FAT-BURN / FETT / GRAS
VET / GRASSO / GRASA
Press and hold A for 3 seconds to reset the fat burn counter.

Distance counter (forward/reverse)
KM / KM / KM
KM / KM / KM
Press and hold A for 3 seconds to reach the setting mode for the distance counter.
The symbol for the forward counter (-) or reverse counter (+) will appear. Press B to select a counter and confirm your setting by pressing A.
You can now set the desired distance. Press B to set each digit and press A to confirm each setting.
After the set distance has been covered the display will blink. Press A to stop the blinking.

Trip timer (forward/reverse)
TIME / TIMER / TIMER
TIMER / TIME / TIMER
Press and hold A for 3 seconds to reach the setting mode for the trip timer.
The symbol for the forward counter (-) or reverse counter (+) will appear. Press B to select a counter and confirm your setting by pressing A.
You can now set the desired riding time. Press B to set each digit and press A to confirm each setting.
After the set riding time has been completed the display will blink. Press A to stop the blinking.

Scan mode SCAN
In scan mode SCAN will appear on the display. The trip distance (DST), maximum speed (MXS), average speed (AVS) and trip timer (TM) alternate on the display.

Service reminder
When the set service interval is reached the service reminder will blink on the display. Press A to reset the service reminder.

Selection of bicycle 1 or bicycle 2
Press A and B together briefly to load the settings for bicycle 1 or 2.
Please note: All stored values except total distance will be reset.

Battery replacement (30-second memory)
Before changing the battery, please press and hold A and B together. { - - - - - } will appear on the display. If a new battery is inserted within 30 seconds, the stored values will remain intact. Press A.
Please dispose of your batteries properly in containers especially set up at retailers. Batteries do not belong in household waste.

Energy saving mode
If the bicycle computer was not used for 5 minutes it will automatically enter standby mode. Press any button or start riding to reactivate the computer.

Easy mode, advanced mode and custom menus for easy mode
Press and hold C for 3 seconds.
The display will now show the mode for advanced users
ADVANCE / FORTGES / AVANCE
ERVAREN / AVANZATO / FACIL
or for beginners
EASY / EINFACH / FACILE
BEGINNER / FACILE / AVANCADO
Select the desired mode by press B.
You can now confirm your selection by pressing A or customize the easy mode. To customize easy mode select the mode by pressing B, then press and hold A.

Press B to activate (ON) or deactivate (OFF) the clock feature. Confirm your setting by pressing A. The other features can be activated or deactivated in the same way.

Disposal of the batteries
Please dispose of your batteries properly in containers especially set up at retailers. Batteries do not belong in household waste. Dispose of the batteries at an approved disposal facility or at your local recycling centre. Contact the disposal system if in doubt.

Disposal of the electronic appliance
This electronic appliance may not be disposed of with normal household waste. Dispose of the unit at an approved disposal facility or at your local recycling centre. Please observe the current rules and regulations when disposing of the appliance. Contact the disposal system if in doubt.

Warranty
We provide a 3-year warranty for this item. The warranty period starts from the date of sale (receipt, proof of purchase). Within this period we rectify all faults which are attributable to material and manufacturing defects at no cost. For damage which is attributable to improper treatment, e.g. dropping, knocking, or water damage, there is no warranty claim.

Free sevice hotline: 00800 5515 6616
http://www.inter-quartz.de

digi-tech®, Valterweg 27A, D-65817 Eppstein